

## Details regarding Participants' stay in Dion

The modern city of Dion is located just near the remnants of the ancient city, approximately 20km from Katerini and 70 km from Thessaloniki. It is situated on the foot of Mount Olympus and that is why it is reach of biota.

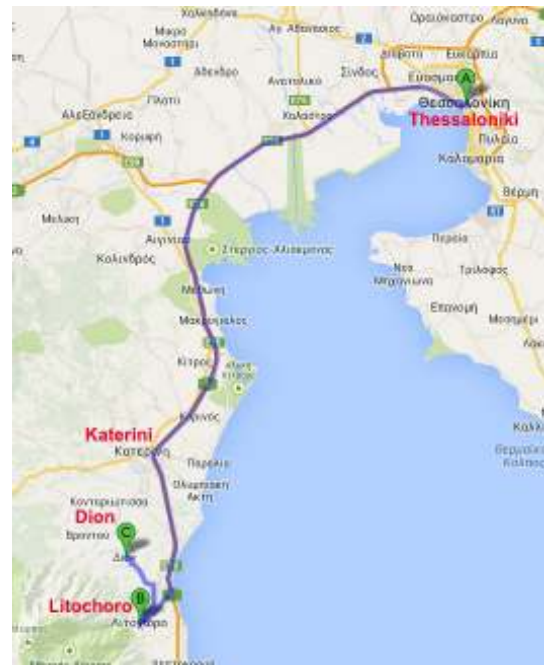
The city has about 1000 habitants and is touristically explored, due to the significant archaeological site, its vicinity to Mount Olympus and the Olympus Festival, organized every summer in the area.

For more info you can visit the site:

<http://www.dion-olympos.gr/en/en.home>

<http://www.festivalolympou.gr/index-en.php>

<http://www.olympusfd.gr/us/default.asp>



In Dion among others there is:

- The **archaeological site**, where all practical and in situ work will be realized (500m from the city center)
- The **Archaeological Laboratory**, where all lectures, as well individual work will be realized
- The **University Hostel**, where Participants will be hosted
- The **Center of mosaics**, where the opening and closing ceremony will be hosted
- The **Archaeological museum**
- **Restaurant**, where breakfast and dinner will be served

According to MARE.17 Program, lectures and insitu applications will be realized at Dion, while the laboratory work will be realized in Thessaloniki, at the Laboratory of Building Materials, Dept. of Civil Engineering, Aristotle University of Thessaloniki.

All round trips from Dion to Aristotle University of Thessaloniki, will be made with the MARE.17 bus.

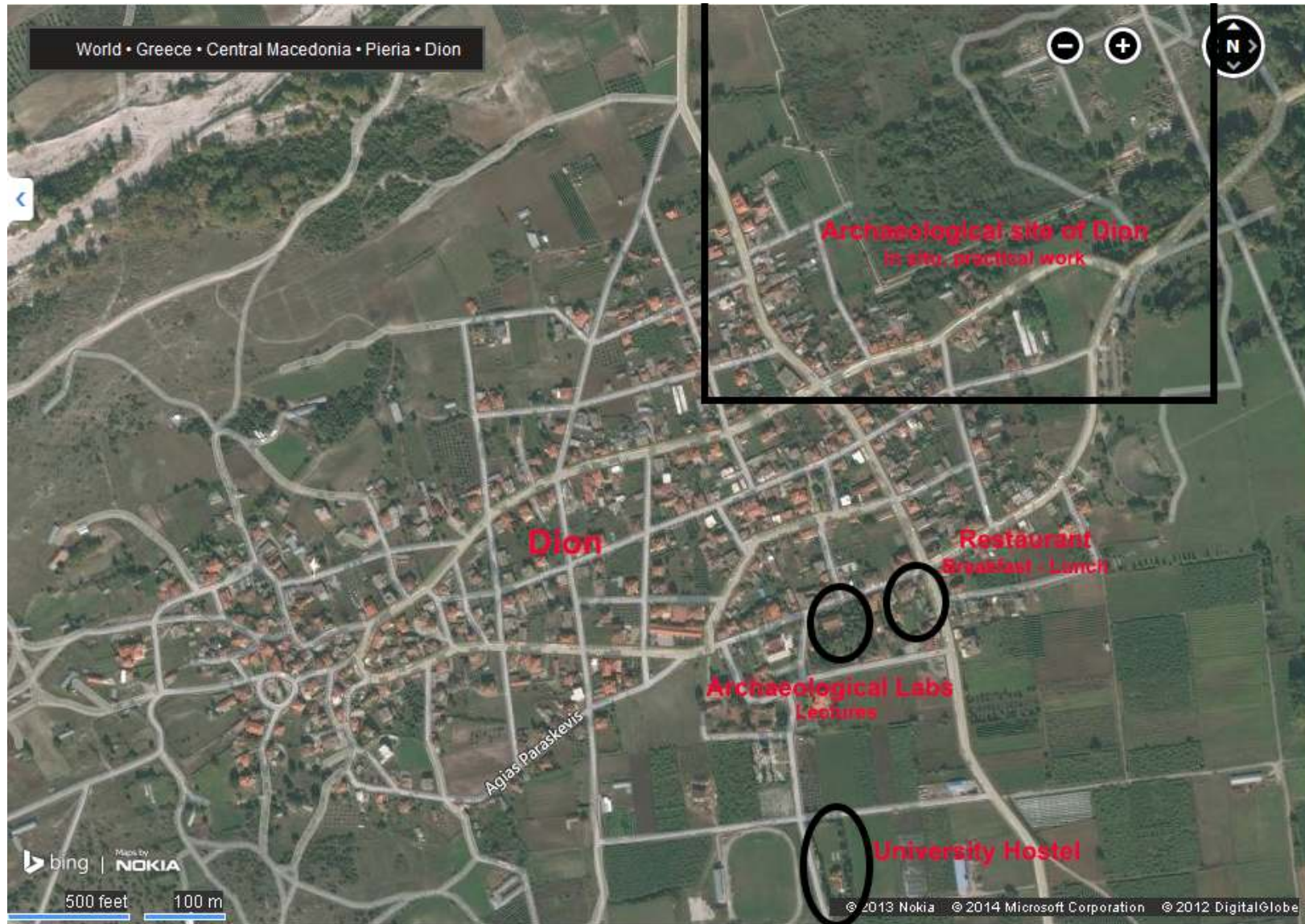
When travelling to Thessaloniki for the laboratory sessions the bus schedule will be:

Dion (hostel) → Thessaloniki: 08:30

Thessaloniki (AUTH) → Dion: 18:30

According to the schedule:

- Breakfast will be served at a Dion Restaurant at 07:00-08:00 or 08:00-09:00
- Dinner will be served at a Dion Restaurant at 20:00-22:00





**MARE.17**

**Materials and Techniques for the Restoration of Monuments**

Compatibility, Durability, Sustainability and Economy issues in Retrofitting Heritage Structures

2-15 July 2017